

Figure 1: Currents in default shape.

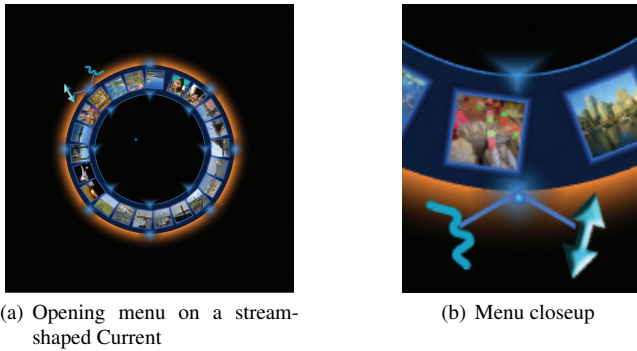


Figure 2: Menu on a stream-shaped Current.

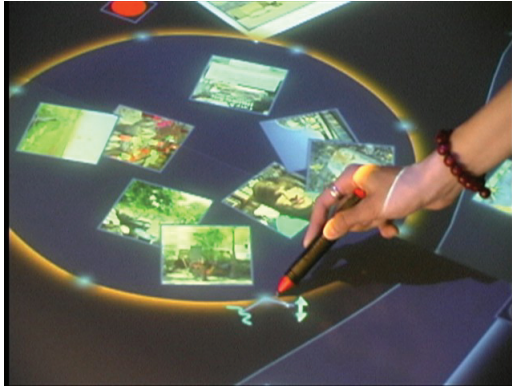
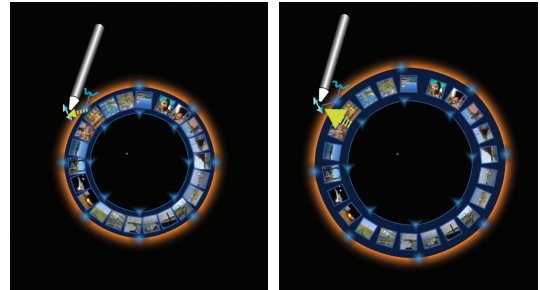
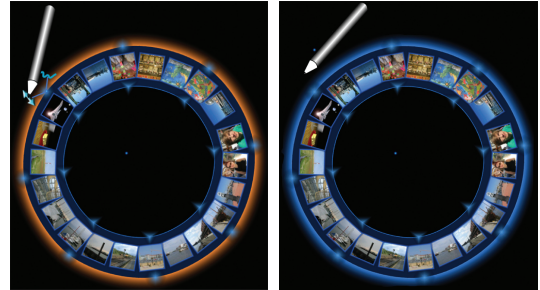


Figure 3: Opening menu on pool-shaped Current.

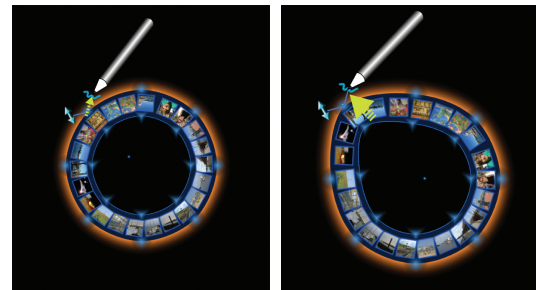


(a) Point-and-touch gesture to resize-icon (b) Moving pen while touching icon

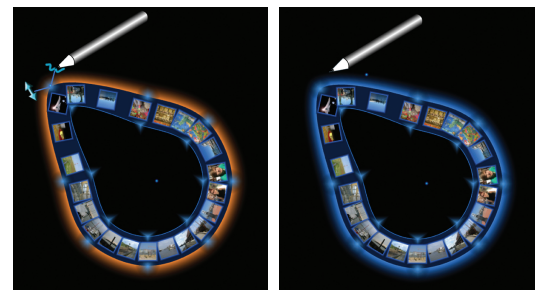


(c) Resizing Current (d) After pen is removed, menu disappears

Figure 4: Resizing a stream-shaped Current.

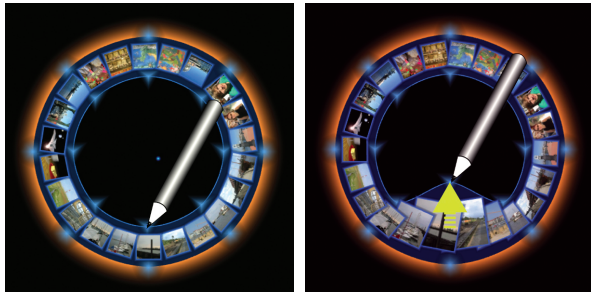


(a) Point-and-touch gesture to reshape-icon (b) Moving pen while touching icon



(c) Reshaping Current (d) After pen is removed, menu disappears

Figure 5: Reshaping a stream-shaped Current.



(a) Point-and-touch gesture to controlpoint on inside border of Current
 (b) Moving pen while touching controlpoint



(c) Changing the width of the Current

Figure 6: Changing the width of a stream-shaped Current.

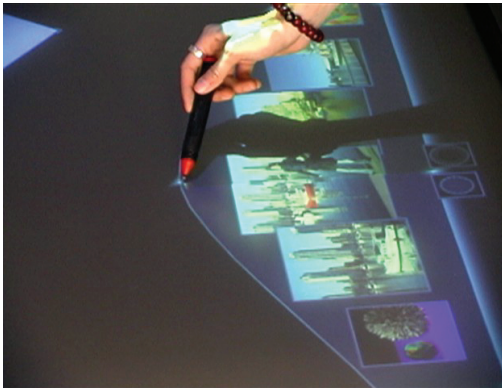


Figure 7: Changing the width of a stream-shaped Current (photo).

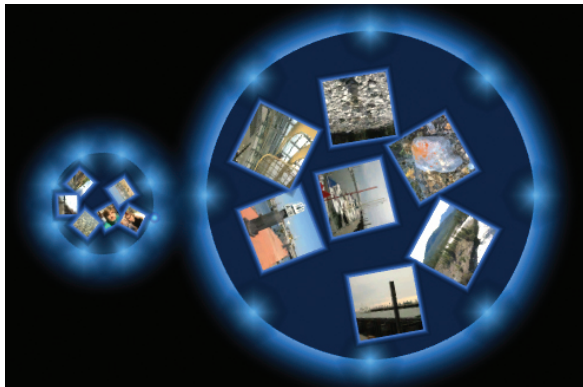


Figure 8: Magnifying and compressing information on a pool-shaped Current.



Figure 9: Magnification of information on a stream-shaped Current.

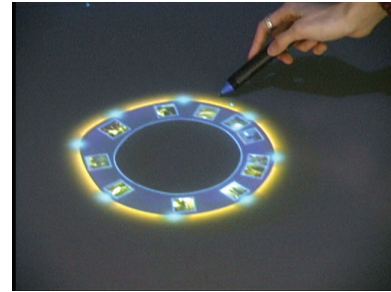
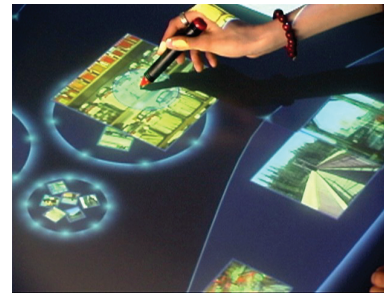
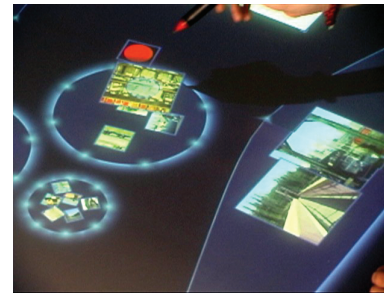


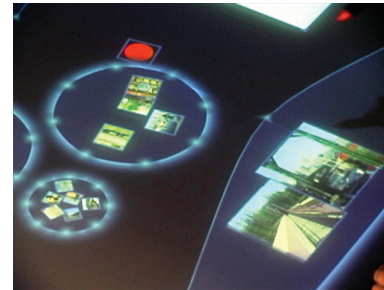
Figure 10: Moving the Current to any location in the workspace.



(a) Moving item over Current.



(b) Item shrinks and orients to the outside border of the Current



(c) Items starts to move

Figure 11: Adding an item to a Current.



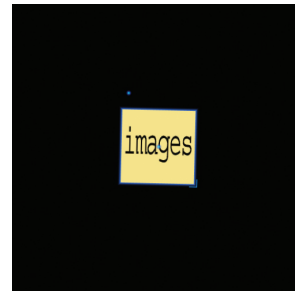
Figure 12: Workspace based on Currents.



Figure 13: Collecting and categorizing images using Currents.



Figure 14: Using stream-shaped Current for ordering information.



(a) Folder holding images



(b) Doubleclicking on the folder invokes a Current



(c) The folder transforms into a Current



(d) Folder disappears and items space out on the Current



(e) Items are scaled to fit onto the size of the Current

Figure 15: Opening a folder into a Current.