

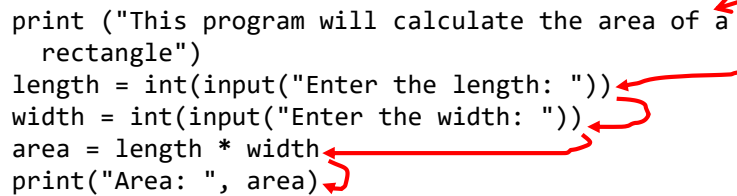
## Making Decisions In Python

In this section of notes you will learn how to have your programs choose between alternative courses of action.

James Tam

## Recap: Programs You've Seen So Far Produces Sequential Execution

```
print ("This program will calculate the area of a  
rectangle")  
length = int(input("Enter the length: "))  
width = int(input("Enter the width: "))  
area = length * width  
print("Area: ", area)
```

A diagram illustrating sequential execution. A grey box labeled 'Start' has a red arrow pointing to the first line of code. Subsequent red arrows point from each line of code to the next line below it, showing a top-to-bottom flow. A final red arrow points from the last line of code to a grey box labeled 'End'.

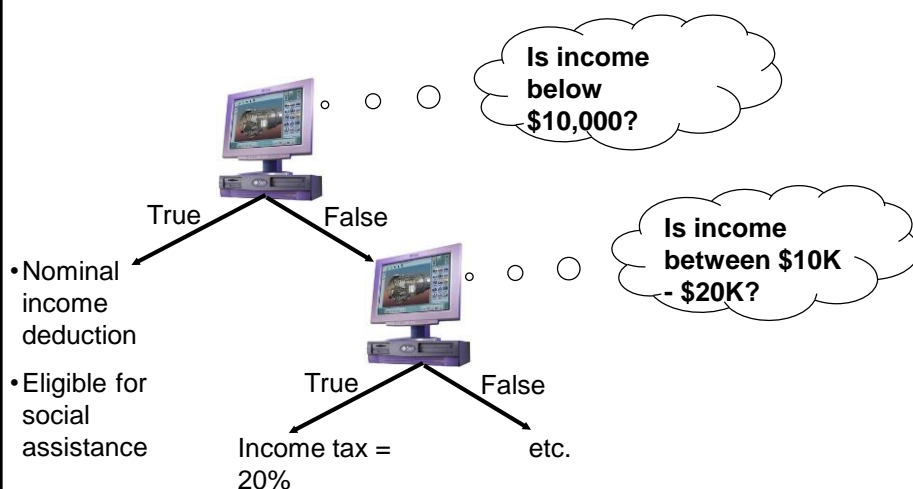
James Tam

## Programming: Decision Making Is Branching

- Decision making is choosing among alternatives (branches).
- Why is it needed?
  - When alternative courses of action are possible and each action may produce a different result.
- In terms of a computer program the choices are stated in the form of a question that only yield an answer that is either true or false
  - Although the approach is very simple, modeling decisions in this fashion is a very useful and powerful tool.

James Tam

## High Level View Of Decision Making For The Computer



James Tam

## How To Determine If Branching Can Be Applied

- Under certain circumstances or conditions events will occur (the program reacts in a certain way if certain conditions have been met).
  - The branch determines if the event occurred and reacts accordingly.
- Examples:
  - If users who don't meet the age requirement of the website he/she will not be allowed to sign up (conversely if users do meet the age requirement he/she will be allowed to sign up).
  - If an employee is deemed as too inexperienced and too expensive to keep on staff then he/she will be laid off.
  - If a person clicks on a link on a website for a particular location then a video will play showing tourist 'hot spots' for that location.
  - If a user enters invalid age information (say negative values or values greater than 114) then the program will display an error message.

slide 5

James Tam

## Decision-Making In Programming (Python)

- Decisions are questions with answers that are either true or false (Boolean expressions) e.g., Is it true that the variable 'num' is positive?
- The program may branch one way or another depending upon the answer to the question (the result of the Boolean expression).
- Decision making/branching constructs (mechanisms) in Python:
  - If (reacts differently only for true case)
  - If-else (reacts differently for the true or false cases)
  - If-elif-else (multiple cases possible but only one case can apply, if one case is true then it's false that the other cases apply)

James Tam

## New Terminology

- **Boolean expression:** An expression that must work out (evaluate to) to either a true or false value.
  - e.g., it is over 45 Celsius today
  - e.g., the user correctly entered the password
- **New term, body:** A block of program instructions that will execute under a specified condition (for branches the body executes when the Boolean expression evaluates to/works out to true)

```
name=input("Name: ")
print(name)
```

This/these instruction/instructions run when you give the Python interpreter the name of a file, the 'body' of the Python program runs

- Style requirement
  - The 'body' is indented (4 spaces)

James Tam

## Note On Indenting

- Indenting can make it easy to see structure (good style)

**Notes 'Introduction to computers' CPSC  
203, 217, 231**

1. Magnetic
  - Hard drives (includes older types of drives: floppy, zip)
2. Optical
  - CD
  - DVD
3. Solid State
  - USB 'thumb'/'flash' drives
  - Solid state hard drives (SSD)

James Tam

## Note On Indenting (2)

- In Python indenting is mandatory in order to determine which statements are part of a body (**syntactically required** in Python).

```
# Single statement body
if (num == 1):
    print("Body of the if")
print("After body")

# Multi-statement body (program 'if2.py')
taxCredit = 0
taxRate = 0.2
income = float(input("What is your annual income: "))
if (income < 10000):
    print("Eligible for social assistance")
    taxCredit = 100
tax = (income * taxRate) - taxCredit
print("Tax owed $%.2f" %(tax))
```

```
What is your annual income: 1000
Eligible for social assistance
Tax owed $100.00
```

```
What is your annual income: 10001
Tax owed $2000.20
```

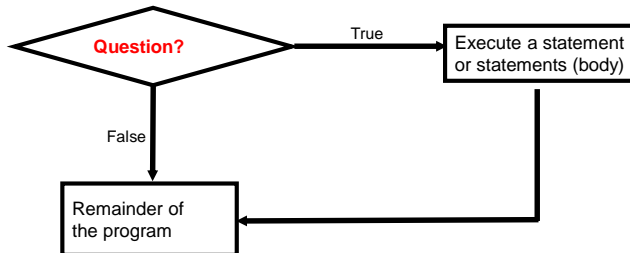
James Tam

## Note On Indenting (3)

- A “sub-body” (IF-branch) is indented by an additional 4 spaces (8 or more spaces) if one IF-branch is inside the body of another IF-branch (this is called ‘nesting’ – more details later).

James Tam

## Decision Making With An 'If'



James Tam

## The 'If' Construct

- Decision making: checking if a condition is true (in which case something should be done).

- **Format:**

(General format)

```
if (Boolean expression):  
    body
```

(Detailed structure)

```
if (<operand> <relational operator> <operand>):  
    body
```

Note: Indenting the body is mandatory!

James Tam

## The 'If' Construct (2)

- **Example (if1.py):**

```
age = int(input("Age: "))
if (age >= 18):
    print("You are an adult")
```

James Tam

## New Terminology

- **Operator/Operation:** action being performed
- **Operand:** the item or items on which the operation is being performed.

**Examples:**

2 + 3

2 \* (-3)

James Tam

## Allowable Operands For Boolean Expressions

### Format:

if (**operand** relational operator **operand**):

### Example:

if (**age** >= **18**):

### Some operand types

- integer
- floats (~real)
- String
- Boolean (True or False)

Make sure that you are comparing operands of the same type or at the very least they must be comparable!

James Tam

## Allowable Relational Operators For Boolean Expressions

if (operand **relational operator** operand) then

Python operator	Mathematical equivalent	Meaning	Example
<	<	Less than	5 < 3
>	>	Greater than	5 > 3
==	=	Equal to	5 == 3
<=	≤	Less than or equal to	5 <= 5
>=	≥	Greater than or equal to	5 >= 4
!=	≠	Not equal to	x != 5

James Tam



## Common Mistake

- Do not confuse the equality operator '==' with the assignment operator '='.
- **Example (Python syntax error)<sup>1</sup>:**

```
if (num = 1): # Not the same as if (num == 1):
```

To be extra safe some programmers put unnamed constants on the left hand side of an equality operator (which always/almost always results in a syntax error rather than a logic error if the assignment operator is used in place of the equality operator).

- A way of producing syntax rather than a logic error:

```
if (1 = num)
```

<sup>1</sup> This not a syntax error in all programming languages so don't get complacent and assume that the language will automatically "take care of things" for you.

James Tam

## A Similar Mistake

- **Example (Python logic error):**

```
num == 1    Not the same as    num = 1
```

James Tam

## An Application Of Branches

- Branching statements can be used to check the validity of data (if the data is correct or if the data is a value that's allowed by the program).

- **General structure:**

```
if (error condition has occurred)
    React to the error (at least display an error message)
```

- **Example:**

```
if (age < 0):
    print("Age cannot be a negative value")
```

JT's tip: if data can only take on a certain value (or range) do not automatically assume that it will be valid. Check the validity of range before proceeding onto the rest of the program.

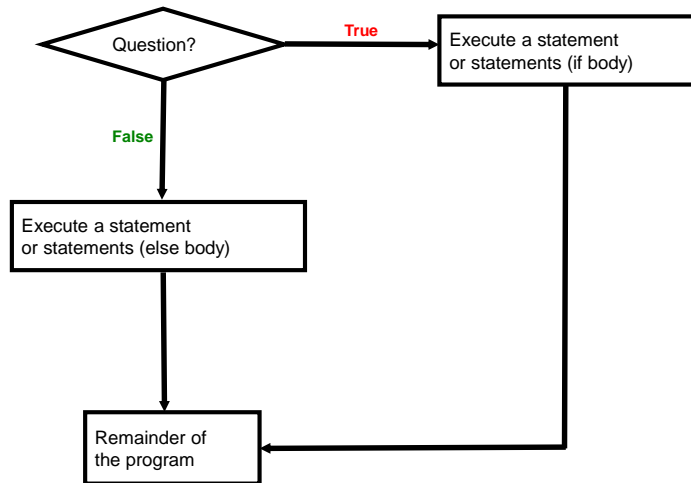
James Tam

## Decision Making With An 'If': Summary

- Used when a question (Boolean expression) evaluates only to a true or false value (Boolean):
  - If the question evaluates to true then the program reacts differently. It will execute the body after which it proceeds to the remainder of the program (which follows the if construct).
  - If the question evaluates to false then the program doesn't react differently. It just executes the remainder of the program (which follows the if construct).

James Tam

## Decision Making With An 'If-Else'



James Tam

## The If-Else Construct

- Decision making: checking if a condition is true (in which case something should be done) but unlike 'if' *also reacting if the condition is not true (false)*.

- **Format:**

```
if (operand relational operator operand):  
    body of 'if'  
else:  
    body of 'else'  
    additional statements
```

James Tam

## If-Else Construct (2)

- **Program name:** if\_else1.py

- **Partial example:**

```
if (age < 18):
    print("Not an adult")
else:
    print("Adult")
print("Tell me more about yourself")
```

```
[csc branches 13 ]> python if_else1.py
How old are you? 17 ← If case
Not an adult
Tell me more about yourself
[csc branches 14 ]>
[csc branches 14 ]> python if_else1.py
How old are you? 27 ← Else case
Adult
Tell me more about yourself
[csc branches 15 ]> █
```

James Tam

## Lesson: Read Things The Way They're Actually Stated (Instead of How You Think They're Stated)

You this read wrong

James Tam

## Lesson: Read Things The Way They're Actually Stated (Instead of How You Think They're Stated)

### •Example: Actual Code (previous version <=2012)

```
if (age >= 18):  
    print("Adult")  
else:  
    print("Not an adult")  
print("Tell me more about yourself")
```

**JT's note:** this version of the program is logically equivalent (does the same thing) as the version you just saw. For practice trace by hand both versions to convince yourself that this is the case. Then run both versions to verify.

James Tam

## Lesson: Read Things The Way They're Actually Stated (Instead of How You Think They're Stated)

### •Example: How some students interpreted the code (optical illusion?)

```
if (age >= 18):  
    print("Adult")  
else:  
    print("Not an adult")  
    print("Tell me more about yourself")
```

**JT's tip:** one way of making sure you read the program code the way it actually is written rather than how you think it should be is to take breaks from writing/editing

James Tam

## If-Else Example

• **Program name:** if\_else2.py

• **Partial example:**

```
if (income < 10000):
    print("Eligible for social assistance")
    taxCredit = 100
    taxRate = 0.1
else:
    print("Not eligible for social assistance")
    taxRate = 0.2
tax = (income * taxRate) - taxCredit
```

```
[csc branches 16 ]> python if_else2.py
What is your annual income: 1000
Eligible for social assistance
Tax owed $0.00
```

```
[csc branches 17 ]> python if_else2.py
What is your annual income: 10000
Not eligible for social assistance
Tax owed $2000.00
```

James Tam

## Quick Summary: If Vs. If-Else

• **If:**

- Evaluate a Boolean expression (ask a question).
- If the expression evaluates to true then execute the 'body' of the if.
- No additional action is taken when the expression evaluates to false.
- Use when your program is supposed to react differently only when the answer to a question is true (and do nothing different if it's false).

• **If-Else:**

- Evaluate a Boolean expression (ask a question).
- If the expression evaluates to true then execute the 'body' of the if.
- If the expression evaluates to false then execute the 'body' of the else.
- That is: *Use when your program is supposed to react differently for both the true and the false cases.*

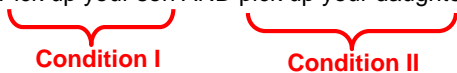
James Tam

## Logical Operations

- There are many logical operations but the three most commonly used in computer programs include:
  - Logical AND
  - Logical OR
  - Logical NOT

James Tam

## Logical AND

- The popular usage of the logical AND applies when *ALL* conditions must be met.
  - Example:
    - Pick up your son AND pick up your daughter after school today.
- 
- Logical AND can be specified more formally in the form of a truth table.

Truth table (AND)		
C1	C2	C1 AND C2
False	False	False
False	True	False
True	False	False
<i>True</i>	<i>True</i>	<i>True</i>

James Tam

## Logical AND: Three Input Truth Table

Truth table			
C1	C2	C3	C1 AND C2 AND C3
False	False	False	False
False	False	True	False
False	True	False	False
False	True	True	False
True	False	False	False
True	False	True	False
True	True	False	False
<i>True</i>	<i>True</i>	<i>True</i>	<i>True</i>

James Tam

## Evaluating Logical AND Expressions

- True **AND** True **AND** True
- False **AND** True **AND** True
- True **AND** True **AND** True **AND** False

James Tam



## Logical OR

- The correct everyday usage of the logical OR applies when *ATLEAST* one condition must be met.

- Example:

- You are using additional recommended resources for this course: the online textbook OR the paper textbook available in the bookstore.



- Similar to AND, logical OR can be specified more formally in the form of a truth table.

Truth table		
C1	C2	C1 OR C2
<i>False</i>	<i>False</i>	<i>False</i>
False	True	True
True	False	True
True	True	True

James Tam

## Logical OR: Three Input Truth Table

Truth table			
C1	C2	C3	C1 OR C2 OR C3
<i>False</i>	<i>False</i>	<i>False</i>	<i>False</i>
False	False	True	True
False	True	False	True
False	True	True	True
True	False	False	True
True	False	True	True
True	True	False	True
True	True	True	True

James Tam

## Evaluating Logical OR Expressions

- True **OR** True **OR** True
- False **OR** True **OR** True
- False **OR** False **OR** False **OR** True

James Tam

## Logical NOT

- The everyday usage of logical NOT negates (or reverses) a statement.

- Example:

- I am finding this class quite stimulating and exciting .....**NOT!!!**

**Statement (logical condition)**

**Negation of the statement/condition**

- The truth table for logical NOT is quite simple:

Truth table	
S	Not S
False	True
True	False

James Tam

## Evaluating More Complex Logical Expressions

- Order of operation (left to right evaluation if the 'level' is equal)
  1. Brackets (inner first)
  2. Negation
  3. AND
  4. OR

James Tam

## Evaluating More Complex Logical Expressions

- True **OR** True **AND** True
- **NOT** (False **OR** True) **OR** True
- (False **AND** False) **OR** (False **AND** True)
- **NOT NOT NOT NOT** True
- **NOT NOT NOT** False

James Tam

## Extra Practice

- (From “Starting out with Python (2<sup>nd</sup> Edition)” by Tony Gaddis)  
Assume the variables a = 2, b = 4, c = 6  
For each of the following conditions indicate whether the final value is true or false.

Expression	Final result
a == 4 or b > 2	
6 <= c and a > 3	
1 != b and c != 3	
a > -1 or a <= b	
not (a > 2)	

James Tam

## Logic Can Be Used In Conjunction With Branching

- Typically the logical operators AND, OR are used with multiple conditions/Boolean expressions:
  - If multiple conditions *must all be met* before the body will execute. (AND)
  - If *at least one condition* must be met before the body will execute. (OR)
- The logical NOT operator can be used to check for inequality (not equal to).
  - E.g., If it's true that the user *did not* enter an invalid value the program can proceed.

James Tam

## Decision-Making With Multiple Boolean Expressions (Connected With **Logic**)

- Format:**

```
if (Boolean expression) Logical operator (Boolean expression):  
    body
```

- Example: if\_and\_positive.py**

```
if (x > 0) and (y > 0):  
    print("All numbers positive")
```

```
[csc branches 19 ]> python if_and.py  
Enter first number: 1  
Enter second number: 0
```

```
[csc branches 20 ]> python if_and.py  
Enter first number: 0  
Enter second number: 111
```

```
[csc branches 21 ]> python if_and.py  
Enter first number: 7  
Enter second number: 13  
All numbers positive
```

James Tam

## Forming Compound Boolean Expressions With The "**OR**" Operator

- Format:**

```
if (Boolean expression) or (Boolean expression):  
    body
```

- Name of the online example: if\_or\_hiring.py**

```
gpa = float(input("Grade point (0-4.0): "))  
yearsJobExperience = int(input("Number of years of job  
experience: "))  
if (gpa > 3.7) or (yearsJobExperience > 5):  
    print("You are hired")  
else:  
    print("Insufficient qualifications")
```

```
Grade point (0-4.0): 2  
Number of years of job experience: 0  
Insufficient qualifications
```

```
Grade point (0-4.0): 2  
Number of years of job experience: 25  
You are hired
```

```
Grade point (0-4.0): 3.85  
Number of years of job experience: 0  
You are hired
```

```
Grade point (0-4.0): 4  
Number of years of job experience: 6  
You are hired
```

James Tam

## Forming Compound Boolean Expressions With The “AND” Operator

- Format:**

```
if (Boolean expression) and (Boolean expression):  
    body
```

- Name of the online example: if\_and\_firing.py**

```
yearsOnJob = int(input("Number of years of job experience:  
    "))  
salary = int(input("Annual salary: "))  
if (yearsOnJob <= 2) and (salary > 50000):  
    print("You are fired")  
else:  
    print("You are retained")
```

```
Number of years of job experience: 10  
Annual salary: 25000  
You are retained
```

```
Number of years of job experience: 10  
Annual salary: 100000  
You are retained
```

```
Number of years of job experience: 0  
Annual salary: 25000  
You are retained
```

```
Number of years of job experience: 0  
Annual salary: 100000  
You are fired
```

James Tam

## The “NOT” Operator

- Format:**

```
if not (Boolean expression):  
    body
```

- Name of the online example: if\_not.py**

- (An equivalent solution can be implemented using the inequality operator '!=')

```
SYSTEM_PASSWORD = "password123"  
userPassword = input("Password: ")  
if not (userPassword == SYSTEM_PASSWORD):  
    print("Using logical NOT-operator: Wrong password")
```

James Tam

## Quick Summary: Using Multiple Expressions

- Use multiple expressions when multiple questions must be asked and the result of expressions are related:
- AND (strict: all must apply):
  - All Boolean expressions must evaluate to true before the entire expression is true.
  - If any expression is false then whole expression evaluates to false.
- OR (less restrictive: at least one must apply):
  - If any Boolean expression evaluates to true then the entire expression evaluates to true.
  - All Boolean expressions must evaluate to false before the entire expression is false.
- Not:
  - Negates or reverses the logic of a Boolean expression
  - May sometimes be super ceded by the use of an inequality operator

James Tam

## Nesting

- Nesting refers to an item that is “inside of” (or “nested in”) some other item.
- Nested branches: an ‘IF-function’ that is inside of another ‘IF-function’
  - Example (assume that the respondent previously indicated that his or her birthplace was an Alberta city)
  - Select the AB city in which you were born
    1. Airdrie
    2. Calgary
    3. Edmonton
    - ...
  - Only when the user specifies residence as Alberta does the program ask for which Alberta city is the residence

James Tam

## Recognizing When Nesting Is Needed

• **Scenario 1 (IF inside IF, other scenarios are described in the next section):** A second question is asked if a first question answers true:

- Example: If it's true the applicant is a Canadian citizen, then ask for the person's income (checking if eligible for social assistance).

- Type of nesting: an IF-branch nested inside of another IF-branch

If (Boolean):

    If (Boolean):

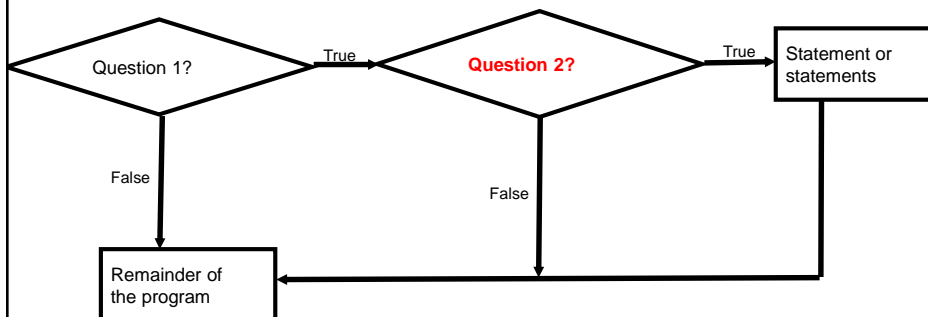
        ...

James Tam

## Nested Decision Making

• Decision making is dependent.

• The first decision must evaluate to true ("gate keeper") before successive decisions are even considered for evaluation.



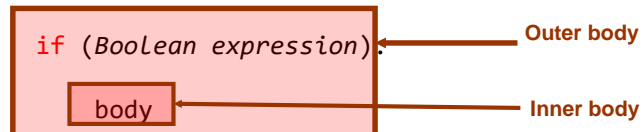
James Tam



## Nested Decision Making

- One decision is made inside another.
- Outer decisions must evaluate to true before inner decisions are even considered for evaluation.
- **Format:**

```
if (Boolean expression):
```



James Tam

## Nested Decision Making (2)

- **Partial example:** nesting.py

```
if (income < 10000):  
    if (citizen == 'y'):  
        print("This person can receive social assistance")  
        taxCredit = 100  
tax = (income * TAX_RATE) - taxCredit
```

```
Annual income: 1000  
Enter 'y' if citizen: y  
This person can receive social assistance  
Income $1000.00  
Tax credit $100.00  
Tax paid $400.00  
Annual income: 1000  
Enter 'y' if citizen: n  
Income $1000.00  
Tax credit $0.00  
Tax paid $500.00  
Annual income: 100000  
Enter 'y' if citizen: y  
Income $100000.00  
Tax credit $0.00  
Tax paid $50000.00
```

James Tam

## Question

- What's the difference between employing nested decision making and a logical AND?

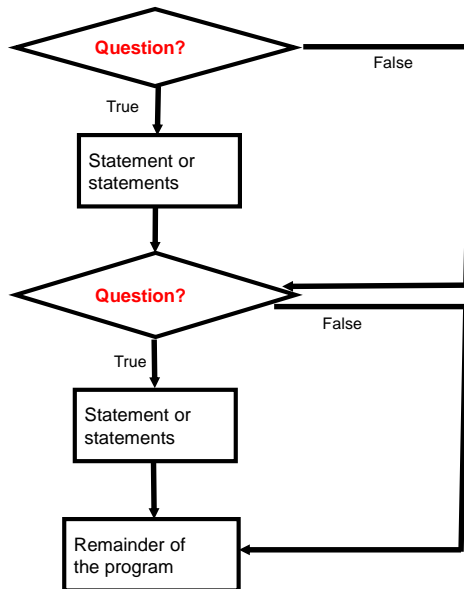
James Tam

## Decision-Making With Multiple Alternatives/Questions

- IF (single question)
  - Checks a condition and executes a body if the condition is true
- IF - ELSE (single question)
  - Checks a condition and executes one body of code if the condition is true and another body if the condition is false
- Approaches for multiple (two or more) questions
  - **Multiple IF's**
  - **IF-ELIF-ELSE**

James Tam

## Decision Making With Multiple If's



James Tam

## Multiple If's: Non-Exclusive Conditions

- Any, all or none of the conditions may be true (independent)
- Employ when a series of independent questions will be asked

- **Format:**

```
if (Boolean expression 1):  
    body 1  
if (Boolean expression 2):  
    body 2  
:  
statements after the conditions
```

James Tam

## Multiple If's: Non-Exclusive Conditions (Example)

- **Example:**

```
if (ableAge > 0):  
    print("Happy birthday!")  
if (bakerAge > 0):  
    print("Happy birthday!")  
if (foxtrotAge > 0):  
    print("Happy birthday!")
```

James Tam

## Multiple If's: Mutually Exclusive Conditions

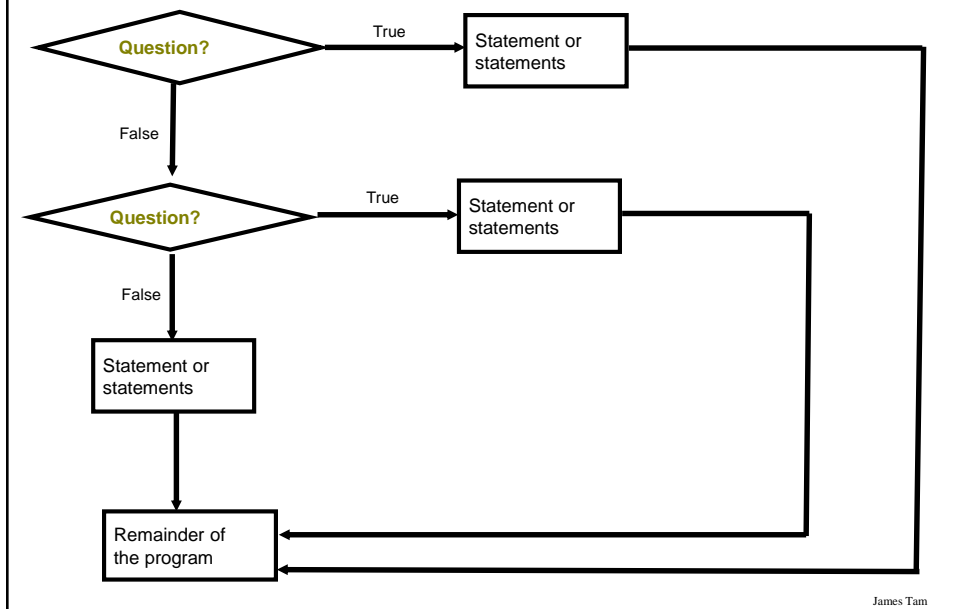
- At most *only one* of many conditions can be true
- Can be implemented through multiple if's
- **Example:** The name of the complete online program is:  
"grades\_inefficient.py"

Inefficient  
combination!

```
if (gpa == 4):  
    letter = 'A'  
if (gpa == 3):  
    letter = 'B'  
if (gpa == 2):  
    letter = 'C'  
if (gpa == 1):  
    letter = 'D'  
if (gpa == 0):  
    letter = 'F'
```

James Tam

## Decision Making With If-Elif-Else



## Multiple If-Elif-Else: Use With Mutually Exclusive Conditions

### •Format:

```
if (Boolean expression 1):  
    body 1  
elif (Boolean expression 2):  
    body 2  
    :  
else  
    body n  
statements after the conditions
```

### **Mutually exclusive**

- One condition evaluating to true excludes other conditions from being true
- Example: having your current location as 'Calgary' excludes the possibility of the current location as 'Edmonton', 'Toronto', 'Medicine Hat'

James Tam

## If-Elif-Else: Mutually Exclusive Conditions (Example)

- **Example:** The name of the complete online program is:

“grades\_efficient.py”

```
if (gpa == 4):  
    letter = 'A'
```

```
elif (gpa == 3):  
    letter = 'B'
```

```
elif (gpa == 2):  
    letter = 'C'
```

```
elif (gpa == 1):  
    letter = 'D'
```

```
elif (gpa == 0):  
    letter = 'F'
```

```
else:  
    print("GPA must be one of '4', '3', '2', '1' or '1'")
```

This approach is more efficient when at most only one condition can be true.

### Extra benefit:

The body of the else executes only when all the Boolean expressions are false. (Useful for error checking/handling).

James Tam

## When To Use Multiple-Ifs

- When all conditions must be checked (more than one Boolean expressions for each ‘if’ can be true).

- Non-exclusive conditions

- **Example:**

- Some survey questions:

- When all the questions must be asked
- The answers to previous questions will not affect the asking of later questions

E.g.,

Q1: What is your gender?

Q2: What is your age?

Q3: What is your country of birth?

James Tam

## When To Use If, Elifs

- When all conditions may be checked but at most only one Boolean expression can evaluate to true.
  - Exclusive conditions
- Example:
  - Survey questions:
    - When only some of the questions will be asked
    - The answers to previous questions WILL affect the asking of later questions
  - E.g.,
  - Q1: Were you born in BC?
  - Q2 (ask only if the person answered 'no' to the previous): Were you born in AB?
  - Q3 (ask only if the person answered 'no' to the previous questions): Were you born in SK?
  - ...

James Tam

## Extra Practice

- (From "Starting out with Python" by Tony Gaddis).

Write a program that prompts the user to enter a number within the range of 1 through 10. The program should display the Roman numeral version of that number. If the number is outside the range of 1 through 10, the program should display an error message. The table on the next slide shows the Roman numerals for the numbers 1 through 10.

James Tam

## Extra Practice (2)

Number	Roman Numeral
1	I
2	II
3	III
4	IV
5	V
6	VI
7	VII
8	VIII
9	IX
10	X

James Tam

## Recap: What Decision Making Mechanisms Are Available /When To Use Them

Mechanism	When To Use
If	Evaluate a Boolean expression and execute some code (body) if it's true
If-else	Evaluate a Boolean expression and execute some code (first body: 'if' ) if it's true, execute alternate code (second body: 'else' ) if it's false
Multiple if's	Multiple Boolean expressions need to be evaluated with the answer for each expression being independent of the answers for the others (non-exclusive). Separate instructions (bodies) can be executed for each expression.
If-elif-else	Multiple Boolean expressions need to be evaluated but zero or at most only one of them can be true (mutually exclusive). Zero bodies or exactly one body will execute. Also it allows for a separate body (else-case) to execute when all the if-elif Boolean expressions are false.

James Tam



## Recap: When To Use Compound And Nested Decision Making

Mechanism	When To Use
Compound decision making	There may have to be more than one condition to be considered before the body can execute. All expressions must evaluate to true (AND) or at least one expression must evaluate to true (OR).
Nested decision making	The outer Boolean expression (“gate keeper”) must be true before the inner expression will even be evaluated. (Inner Boolean expression is part of the body of the outer Boolean expression).

James Tam

## Testing Decision Making Constructs

- Make sure that the body of each decision making mechanism executes when it should.
- Test:
  - 1) Obvious true cases
  - 2) Obvious false cases
  - 3) Boundary cases

James Tam

## Testing Decisions: An Example

```
Program name: first_test_example.py
num = int(input("Type in a value for num: "))
if (num >= 0):
    print("Num is non-negative. ")
else:
    print("Num is negative. ")
```

James Tam

## Lesson: Avoid Using A Float When An Integer Will Do

```
Program name: real_test.py
num = 1.0 - 0.55
if (num == 0.45):
    print("Forty five")
else:
    print("Not forty five")
```

```
[csl branches 13 ]> python real_test.py
Not forty five
```

James Tam

## Epsilon

- Because floating point numbers are only approximations of real numbers when performing a comparison “seeing if two numbers are ‘close’ to each other” sometimes an Epsilon is used instead of zero.
- Epsilon is a very small number.
- If the absolute difference between the numbers is less than the Epsilon then the numbers are pretty close to each other (likely equal).

James Tam

## Not Using Epsilon: Floating Point Error

**Example name:** no\_epsilon.py

```
a = 0.15 + 0.15
b = 0.2 + 0.1
if (a == b):
    print("Equal")
else:
    print("Not equal")
```

```
C:\217>python epsilon.py
Not equal
```

James Tam

## Using Epsilon: Better Approach

**Example name:** employing\_epsilon.py

```
EPSILON = 0.00001
```

```
a = 0.15 + 0.15
```

```
b = 0.2 + 0.1
```

```
if (abs((a - b)/b) < EPSILON):
```

```
    print("Equal: the different is less than a small number")
```

```
else:
```

```
    print("Not equal")
```

```
Equal: the different is less than a small number
```

James Tam

## Extra Practice

- (From “Starting out with Python” by Tony Gaddis)

The following code contains several nested if-else statements. Unfortunately it was written without proper alignment and indentation. Rewrite the code and use the proper conventions of alignment and indentation.

James Tam

## Extra Practice (2)

# Grade cut-offs

A\_SCORE = 90

B\_SCORE = 80

C\_SCORE = 70

D\_SCORE = 60

**Common student question: If there isn't a pre-created solution then how do I know if I "got this right"?**

```
if (score >= A_SCORE):
    print("Your grade is A")
else:
    if (score >= B_SCORE):
        print("Your grade is B")
    else:
        if (score >= C_SCORE):
            print("Your grade is C")
        else:
            if (score >= D_SCORE):
                print("Your grade is D")
            else:
                print("Your grade is F")
```

James Tam

## Rule Of Thumb: Branches

- Be careful that your earlier cases don't include the later cases if each case is supposed to be handled separately and exclusively.

### **Example 1**

```
if (num >= 0):
elif (num >= 10):
elif (num >= 100):
```

### **Example 2**

```
if (num >= 100):
elif (num >= 10):
elif (num >= 0):
```

James Tam

## Extra Practice: Grades

- Write a program that converts percentages to one of the following letter grades: A (90 – 100%), B (80 – 89%), C (70 – 79%), D (60 – 69%), F (0 – 59%).

### # First approach

```
if (percentage <= 100) or (percentage >= 90):  
    letter = 'A'  
elif (percentage <= 89) or (percentage >= 80):  
    letter = 'B'  
Etc.
```

### # Second approach

```
if (percentage <= 100) and (percentage >= 90):  
    letter = 'A'  
elif (percentage <= 89) and (percentage >= 80):  
    letter = 'B'  
Etc.
```

James Tam

## Decision Making: Checking Matches

- Python provides a quick way of checking for matches within a set.
  - E.g., for a menu driven program the user's response is one of the values in the set of valid responses.

### Format:

(Strings)

```
if <string variable> in ("<string1> <string2>...<stringn>"):  
    body
```

(Numeric)

```
if <numeric variable> in (<number1>, <number2>,...<numbern>):  
    body
```

James Tam

## Decision Making: Checking Matches (2)

### **Example:**

```
(String):
if "the" in ("thetheretheir"):
    print("the is a sub-string of thetheretheir ")
else:
    print("not sub-string")

answer = input("Selection: ")
if answer in ("one two seven"):
    print("selection taken")
else:
    print("selection available")

(Numeric):
if num in (1, 2, 3):
    print("in set")
```

James Tam

## Checking Matches: Another Example

### • **Complete example:** user\_names.py

```
userNames = ""
print("User names already been taken [%s]" %userNames)
userName = input("Enter a user name: ")
if (userName in userNames):
    print("Name %s has already been taken" %userName)
else:
    userNames = userNames + userName + " "
print()
```

James Tam

## Checking Matches: Another Example (2)

```
print("User names already been taken [%s]" %userNames)
userName = input("Enter a user name: ")
if (userName in userNames):
    print("Name %s has already been taken" %userName)
else:
    userNames = userNames + userName + " "
print()

print("Set of user name [%s]" %userNames)
```

```
User names already been taken []
Enter a user name: kremer

User names already been taken [kremer ]
Enter a user name: tam

Set of user name [kremer tam ]

User names already been taken []
Enter a user name: tam

User names already been taken [tam ]
Enter a user name: tam
Name tam has already been taken

Set of user name [tam ]
```

## After This Section You Should Now Know

- What are the three decision making constructs available in Python:
  - If
  - If-else
  - If-elif-else
  - How does each one work
  - When should each one be used
- Three logical operations:
  - AND
  - OR
  - NOT
- How to evaluate and use decision making constructs:
  - Tracing the execution of simple decision making constructs
  - How to evaluate nested and compound decision making constructs and when to use them

James Tam



## **After This Section You Should Now Know (2)**

- How the bodies of the decision making constructs are defined:
  - What is the body of a decision making construct
  - What is the difference between decision making constructs with simple bodies and those with compound bodies
- What is an operand
- What is a relational operator
- What is a Boolean expression
- How multiple expressions are evaluated and how the different logical operators work
- How to test decision making constructs

James Tam

## **Copyright Notification**

- “Unless otherwise indicated, all images in this presentation are used with permission from Microsoft.”

slide 82

James Tam